

PSYCHOLOGY

NEW HORIZONS



Neural and hormonal mechanisms in aggression, roles of the limbic system, serotonin and testosterone. Genetic factors. Ethological explanation of aggression and evolutionary explanations of human aggression.

Core content and specialist knowledge:
Revise and practice exam papers in preparation for your final exams.

Paper 1: Introducing topics in psychology – Social influence, Memory, Attachment and Psychopathology.
Paper 2: Psychology in context - Approaches, Biopsychology and Research methods.
Paper 3: Issues and options in psychology- Issues and debates, Relationships Schizophrenia, and Aggression.

FINAL A LEVEL EXAMS

AGGRESSION

EXAM REVISION

Diagnosis and classification of schizophrenia. Biological, cognitive and social explanations, alongside treatments including drug therapy and CBT.

Rosenhan – Being Sane in insane places

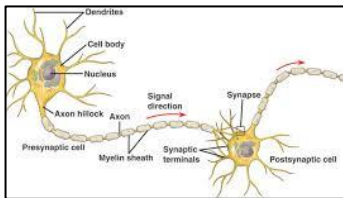
Gottesman – twin study

Sexual selection, factors affecting attraction in romantic relationships, theories of romantic relationships, virtual and parasocial relationships

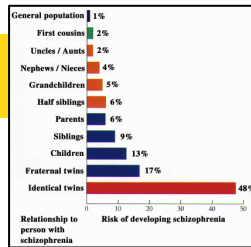
SCHIZOPHRENIA

RELATIONSHIPS

Gender and culture in Psychology – **universality and bias**. Gender bias including androcentrism and alpha and beta bias; cultural bias, including ethnocentrism and cultural relativism.



How behaviour can be explained by biological structures and processes such as the brain, neurotransmitters and hormones.

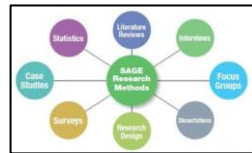
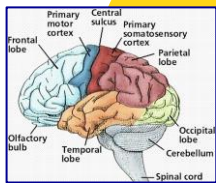


The **nature-nurture** debate: the relative importance of heredity and environment in determining behaviour; the interactionist approach.

Paul Broca: Localisation of function

BIOPSYCHOLOGY

ISSUES AND DEBATES

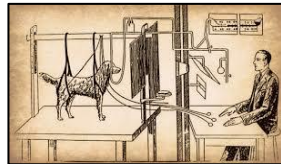


YEAR 13

RESEARCH METHODS

Students should demonstrate knowledge and understanding of research methods, scientific processes and techniques of data handling and analysis, be familiar with their use and be aware of their strengths and limitations.

Ivan Pavlov – Classical conditioning



Origins of Psychology: Wundt, introspection and the emergence of Psychology as a science. The basic assumptions of six approaches.



PSYCHOPATHOLOGY

Definitions of abnormality and an exploration of phobias, Depression and OCD. Explanations and treatments

APPROACHES



Burrhus Skinner – Operant conditioning

Lorenz and Harlow – animal studies

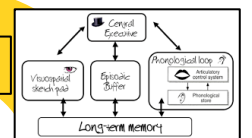


ATTACHMENT

John Bowlby



Baddeley and Hitch



Atkinson and Shiffrin

Theories of memory: Multi-store model including capacity, duration and encoding. Working Memory model and Long Term Stores.

YEAR 12

SOCIAL INFLUENCE

Stanley Milgram: Situational factors affecting obedience

Philip Zimbardo: Stanford Prison Experiment



MEMORY

Eye-witness Testimony: Post-event contamination and Anxiety

Theories of Forgetting: Retrieval Failure and Interference

Solomon Asch: Conformity

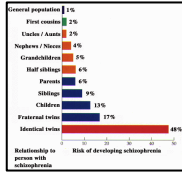


Neural and hormonal mechanisms in aggression, roles of the limbic system, serotonin and testosterone. Genetic factors. Ethological explanation of aggression and evolutionary explanations of human aggression.

PSYCHOLOGY

NEW HORIZONS

Diagnosis and classification of schizophrenia. Biological, cognitive and social explanations, alongside treatments including drug therapy and CBT.



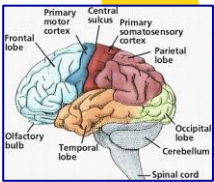
SCHIZOPHRENIA

Gottesman – twin study

Paul Broca: Localisation of function

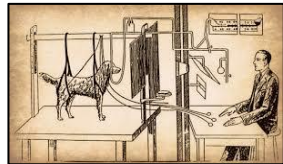
BIOPSYCHOLOGY

How behaviour can be explained by biological structures and processes such as the brain, neurotransmitters and hormones.



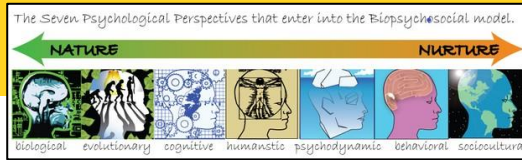
Ivan Pavlov – Classical conditioning

Origins of Psychology: Wundt, introspection and the emergence of Psychology as a science. The basic assumptions of six approaches.



APPROACHES

Burrhus Skinner – Operant conditioning



Lorenz and Harlow – animal studies



ATTACHMENT

John Bowlby



YEAR 12

SOCIAL INFLUENCE

Solomon Asch: Conformity



Stanley Milgram: Situational factors affecting obedience

Philip Zimbardo: Stanford Prison Experiment



AGGRESSION

AGGRESSION



RELATIONSHIPS

Sexual selection, factors affecting attraction in romantic relationships, theories of romantic relationships, virtual and parasocial relationships



Gender and culture in Psychology – **universality and bias**. Gender bias including androcentrism and alpha and beta bias; cultural bias, including ethnocentrism and cultural relativism.

ISSUES AND DEB

The **nature-nurture** debate: the relative importance of heredity and environment in determining behaviour; the interactionist approach.

YEAR 13

RESEARCH METHODS

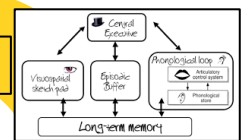


Definitions of abnormality and an exploration of phobias, Depression and OCD. Explanations and treatments



PSYCHOPATHOLOGY

Baddeley and Hitch



Atkinson and Shiffrin

MEMORY

Eye-witness Testimony: Post-event contamination and Anxiety

Theories of Forgetting: Retrieval Failure and Interference

FINAL A LEVEL EXAMS

EXAM REVISION

Core content and specialist knowledge: Revise and practice exam papers in preparation for your final exams.

Paper 1: Introducing topics in psychology – Social influence, Memory, Attachment and Psychopathology.
Paper 2: Psychology in context - Approaches, Biopsychology and Research methods.
Paper 3: Issues and options in psychology- Issues and debates, Relationships, Schizophrenia, and Aggression.

Students should demonstrate knowledge and understanding of research methods, scientific processes and techniques of data handling and analysis, be familiar with their use and be aware of their strengths and limitations.